

Audi

2017



Audi

# A5

[www.time4leasing.co.uk/car-leasing/audi/](http://www.time4leasing.co.uk/car-leasing/audi/)





# An artful expression of timeless form.

A5	A5	S5	S5
2.0T Sport Coupe	2.0T Sport Cabriolet	3.0T Coupe	3.0T Cabriolet

What’s in a name? In this case, a passionate statement of purpose. The 2017 Audi A5 2.0T Sport. The name evokes dynamic handling, peerless innovations and iconic style. Whether in its Coupe or Cabriolet form, or the exhilarating Audi S5 model, this vehicle is perfectly equipped to redefine your concept of a great drive.



2017 Audi A5 2.0T Sport Coupe shown in Daytona Gray pearl with available equipment.





2017 Audi S5 Coupe shown in Florett Silver metallic with available equipment.



2017 Audi A5 2.0T Sport Cabriolet shown in Daytona Gray pearl with available equipment.



# Once a sketch.



2017 Audi A5 2.0T Sport Coupe shown in Florett Silver metallic with available equipment.

# Now an icon.

At first, it was only a sketch. Over time, those lines became a dynamic statement of form, creating the striking, unmistakable silhouette of the Audi A5. It's a fluid look, framed by a signature Singleframe® grille, illuminated by standard LED day-time running lights and shaped by its iconic roofline. Standard enlarged S line® competition plus bumpers add a muscular look to the vehicle while paying homage to the spirit of Audi Sport® heritage, proving that you can make history off a single sketch on paper.



2017 Audi A5 2.0T Sport Coupe shown in Daytona Gray pearl with available equipment.





## Getting inside your comfort zone.

As we see it, you can expand your horizons on the road, but on the inside, you should revel in modern luxury. Our interior design emphasizes form and functionality, with controls intuitively placed at your fingertips. The driver-centric cockpit with a flat-bottom three-spoke multifunction sport steering wheel with shift paddles is a way to help ensure you're navigating the vehicle's capabilities while finding the way to your comfort zone.







2017 Audi A5 2.0T Sport Coupe shown with Black leather and available equipment.



# It's time to open up to the world.

Indulge in a world seen and felt with the top down in your Audi A5 2.0T Sport Cabriolet. Day or night, with wind gliding past you, discover a thrilling connection to the world around you—while enjoying the finer things on the inside, like standard leather seating surfaces. With its design, precision and details like a power-retractable roof, the A5 2.0T Sport Cabriolet is bringing sleek style to the open road.



## // Active rollover protection system

In the event that your Audi A5 2.0T Sport Cabriolet rolls over, sensors deploy two pop-up roll bars from hidden compartments in the rear. Reinforced A-pillars up front and safety belt pretensioners also help protect passengers. It's another way we keep innovative design a priority.

2017 Audi A5 2.0T Sport Cabriolet shown in Daytona Gray pearl with available equipment.



# Give peace of mind a chance.

We understand that you can't control everything you experience on the road. That's why we've engineered innovative solutions to help provide a safer road experience. This includes added strength and safety features in the vehicle, such as rigid occupant safety cell and advanced airbag technologies<sup>1</sup> and an active rollover protection system in the Cabriolet model—setting your mind a little more at ease.



2017 Audi A5 2.0T Sport Coupe shown in Florett Silver metallic with available equipment.

<sup>1</sup> Airbags are supplemental restraints only and will not deploy in all crash circumstances. Always use safety belts, and seat children only in the rear, using restraint systems appropriate for their size and age.



# Not reliant on good looks alone.

The thrill of driving lies where power meets confidence. With standard quattro® all-wheel drive, you can experience the intensity of its precision handling. And with the added delivery of power through an available eight-speed Tiptronic® automatic transmission or six-speed manual transmission in the Coupe or standard Tiptronic® in the Cabriolet, you can have the engineering you need to unleash your vehicle's true character.

// Engine

2.0-liter TFSI® turbocharged four-cylinder engine.  
  
220 hp / 258 lb-ft.

// Drivetrain

Six-speed manual with quattro® all-wheel drive (Coupe only) or available Tiptronic® automatic transmission with quattro® all-wheel drive.

// Performance

Top track speed of 130 mph.<sup>1</sup>  
  
0-60 mph in 6.3 sec with manual transmission (Coupe).  
  
0-60 mph in 6.1 sec with Tiptronic® transmission (Coupe).  
  
0-60 mph in 6.6 sec with Tiptronic® transmission (Cabriolet).



2017 Audi A5 2.0T Sport Coupe shown in Suzuka Gray metallic with available equipment.

<sup>1</sup> Top track speed is electronically limited in the U.S. Always obey all speed and traffic laws.





# Dressed for the role it's destined to play.

While this vehicle may move fast, its design isn't fleeting. Daring lines stretch the length of the vehicle's body to give its muscular yet sensual character.<sup>1</sup> Defining the sporty feel are details like quad exhaust tips, S bumpers and Aluminum-optic mirror housings and trim elements that look smart any season.

# S5



2017 Audi S5 Coupe shown in Glacier White metallic with available equipment.

<sup>1</sup> Always obey all speed and traffic laws.



# What's inside gives it character.

In here, character isn't built. It's revealed. Sport-contoured seats with Alcantara® or available Fine Nappa leather seating surfaces signify our dedication to craftsmanship while helping hold you through turns. Performance integrity gets even more intriguing with features that help sharpen your control, like a flat-bottom three-spoke sport steering wheel with the S5 insignia emblazoned on it. Taken as a whole, this is an interior that isn't shy about what it is.





# High-performance art that moves you.

# S5



## // Engine

3.0-liter TFSI®  
supercharged  
V6 engine.

333 hp / 325 lb-ft.

## // Drivetrain

Six-speed manual with  
quattro® all-wheel drive  
(Coupe only) or available  
seven-speed S tronic®  
dual-clutch automatic  
transmission with quattro®  
all-wheel drive.

Available sport differential.

## // Performance

Top track speed of  
155 mph.<sup>1</sup>

0–60 mph in 4.9 sec (Coupe).

0–60 mph in 5.3 sec (Cabriolet).

A supercharged 3.0-liter TFSI® V6 engine sits comfortably under the hood of the Audi S5, and can produce 333 horsepower and an exhilarating 325 lb-ft of torque, to propel the S5 Coupe to 60 mph in just 4.9 seconds. Experience the heart and soul of Audi Sport® performance cars through the sport-tuned suspension that is ready for the street or the track. We wanted to make sure the thrill you feel behind the wheel was as powerful as possible.<sup>2</sup>

2017 Audi S5 Coupe shown in Misano Red pearl with available equipment.

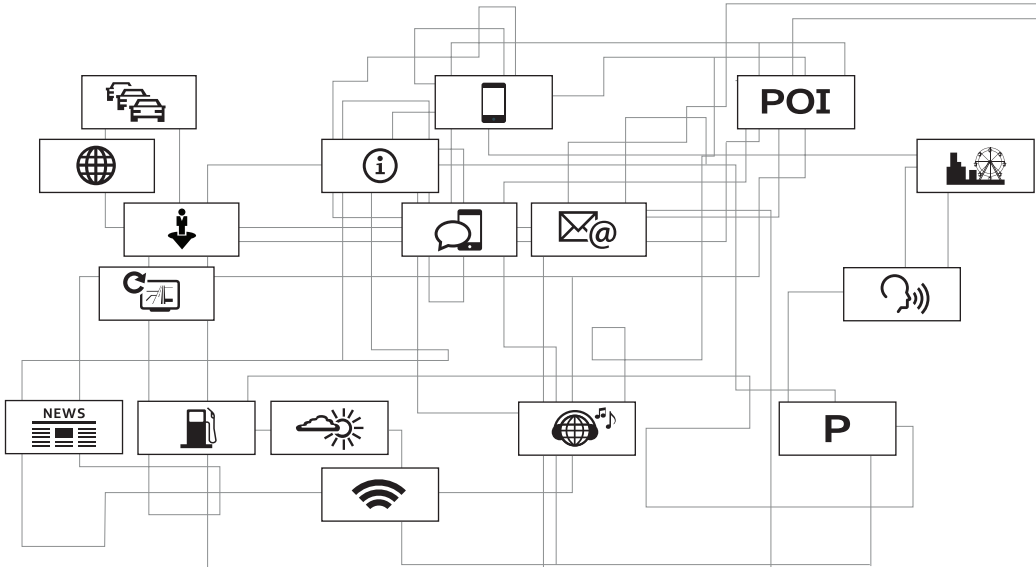
<sup>1</sup> Top track speed is electronically limited in the U.S. Always obey all speed and traffic laws. <sup>2</sup> Always obey all speed and traffic laws.



The available intelligent MMI® system offers a wealth of easily accessible information, all at the twist of a dial or command of your voice.<sup>1</sup> You'll have access to material such as music files, contact information and destinations. The possibilities are even bigger when you input to available Audi connect®.<sup>2</sup> With this kind of access, you could say there is no better stage.

# The soul of a new machine.

Stay connected even when you're on-the-go with the power of the available Audi connect®.<sup>2</sup> Looking for interesting events in your area? Hoping to avoid heavy traffic? Want to keep passengers entertained with an in-vehicle Wi-Fi® hotspot?<sup>3</sup> Audi connect has you covered with a robust portfolio of services with the means to inform, entertain and get you to where you want to go.



# Our vision of live sound.

When we set out to compose an incredibly precise sound system, we didn't want you to just hear every note. We wanted you to experience them. From perfectly sculpted high notes to a crystal-clear mid-range to deep-diving lows, the available 505-watt Bang & Olufsen® Sound System delivers a stunning recreation of sound that you can feel as much as hear. So whether you're in the mood to be soothed, engaged or inspired, you can expect an immersive experience that can only be matched by the precision driving of your Audi.



<sup>1</sup> Voice control system not available for Cabriolet models. <sup>2</sup> Always pay careful attention to the road, and do not drive while distracted. Audi connect® should only be used when it is safe and appropriate. Audi connect® services and features are optional, provided with the support of authorized affiliated and third party service providers, and may require additional subscriptions with separate terms and conditions. Available on select models. Certain services collect location information, see Terms of Service for information about how to disable and for other details. <sup>3</sup> Always pay careful attention to the road, and do not drive while distracted. The Wi-Fi® hotspot feature is intended for passenger use only. Audi connect® features and technologies are optional, may require an additional subscription with separate terms and conditions, and should be used only when it is safe and appropriate. See materials provided by wireless carrier for terms, privacy, data security details. Returning devices connect automatically and use plan data unless hotspot is removed from device settings.

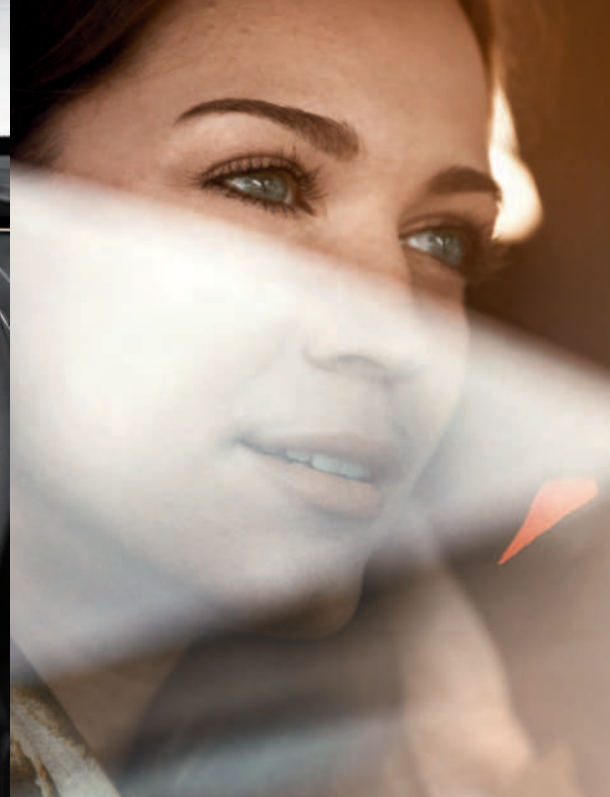




A



B



C



D



E



F



G



H



I

- A. **Rear lip spoiler** | Not just for visual appeal, it also delivers a true performance benefit.
- B. **Flat-bottom three-spoke multifunction sport steering wheel** | Stay in charge of the entertainment as you access your MMI® system while keeping both hands on the wheel.
- C. **Retractable acoustic power-folding soft top (Cabriolet)** | Take advantage of clear skies for as long as the sun is out.
- D. **Available Audi connect® with Google Earth™ mapping service**<sup>1</sup>
- E. **Available Audi side assist** | Helping you stay informed about what is approaching from the side or the rear.<sup>2</sup>
- F. **Three-zone automatic climate control** | Helping keep your passengers cozy with climate-control function keys.
- G. **Available adaptive xenon plus headlights**
- H. **LED taillights**
- I. **Split folding rear seatbacks**
- J. **Panoramic tilting sunroof (Coupe)** | Get a nearly unimpeded view of the sky and a feeling of infinite headroom.



<sup>1</sup> Always pay careful attention to the road, and do not drive while distracted. Audi connect® should only be used when it is safe and appropriate. Audi connect® services and features are optional, provided with the support of authorized affiliated and third party service providers, and may require additional subscriptions with separate terms and conditions. Available on select models. Certain services collect location information, see Terms of Service for information about how to disable and for other details. <sup>2</sup> The features discussed are not substitutes for attentive driving. Always check surrounding traffic and use turn signals. Please see your owner's manual for further details and important limitations.

J



## Audi Genuine Accessories

You're a try-anything-once, never-sit-still, give-it-your-all kind of person. Life doesn't just string you along; you strive to take life further. Audi Genuine Accessories can help you do just that. For personalizing, help in protecting and showing your Audi pride, our accessories were designed with you in mind.

# Now for the finishing touches.



### A. Ski and snowboard racks<sup>1</sup>

These racks help transport your equipment to the slopes. The standard attachment (shown) holds two sets of skis or two snowboards. A deluxe attachment, sold separately, holds up to three sets of skis or four snowboards.



### B. Aluminum bike rack<sup>1</sup>

Help protect your other ride. This locking holder fits 20- to 80-mm bike frames with both wheels on the bike and helps keep the bike upright as you secure it in place.



### C. Compact cargo carrier<sup>1</sup>

Extra gear won't take up valuable cargo space with our aerodynamic carrier that offers a generous 10.5-cu-ft capacity. Size: 76" long, 26" wide, 15" high.

<sup>1</sup> All roof-rack system attachments require the base carrier bars. All attachments sold separately. Recreational equipment, sporting equipment and luggage not included.



## Audi Genuine Accessories

### Audi Genuine Sport and Design Accessories

For a bolder appearance or a finishing touch, we have a solution that helps make every mile more enjoyable—and more yours.

- Stylish wheel designs
- Audi beam
- License plate frames

### Audi TravelSpace Transport Accessories

When on-the-go, help make sure your gear fits with a variety of intelligent and innovative solutions.

- Bike and ski racks
- Rooftop cargo carriers
- In-vehicle cargo bags

### Audi Guard Comfort and Protection Accessories

Help protect what you love. Use Audi Guard Comfort and Protection Accessories to help keep your Audi looking like new—inside and out.

- Floor mats
- First aid kit
- Cargo mats

### Audi Guard Car Care Products

Your Audi A5 deserves the best, and this is it—a car care line designed specifically for Audi vehicles.

- Leather care
- Detailing tools
- Winter protection

#### A. A5 2.0T Sport winter wheel and tire package

Adding style and performance, this winter wheel and tire package features Audi Original winter tires engineered to help improve traction and handling in a variety of winter weather conditions—in temperatures below 45°F.<sup>1</sup> See your authorized Audi dealer for details.

#### B. 19" 5-arm hollow-spoke design wheels

Experience the high-performance beauty of this eye-catching design. The hollow-spoke feature results in a lightweight wheel. The five-arm design features a machined face with Gloss Black spokes. This style is also available in an Audi wheel and tire package.

#### C. All-weather floor mats

The all-weather floor mats feature a deep-ribbed, channeled design that helps protect your vehicle's floor and carpeting from the elements. Black mats are available in sets of two for front or rear. Front mats feature the A5 logo.

#### D. All-weather cargo mat

Custom fit for your A5 2.0T Sport, the raised outside edge of the cargo mat helps contain spills and protect cargo-area carpeting from stains. The textured material helps control load shifting.

#### E. First aid kit

In the event of an emergency, you'll want these essentials close at hand. Includes an emergency blanket, burn/wound dressings and much more.



A



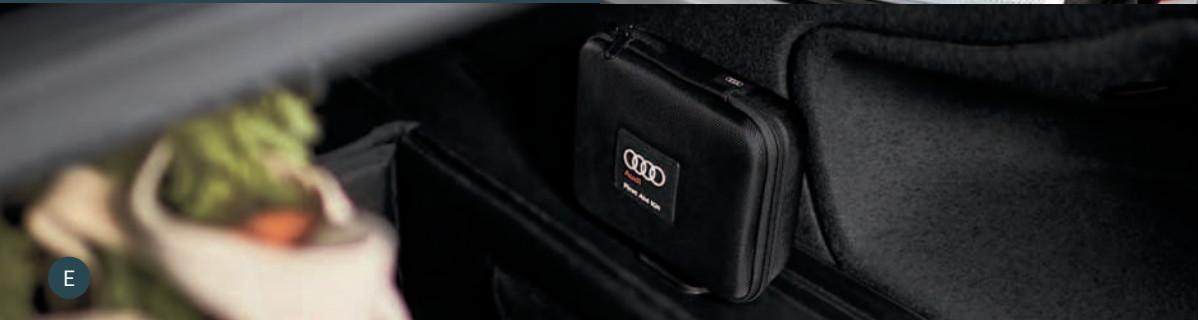
B



C

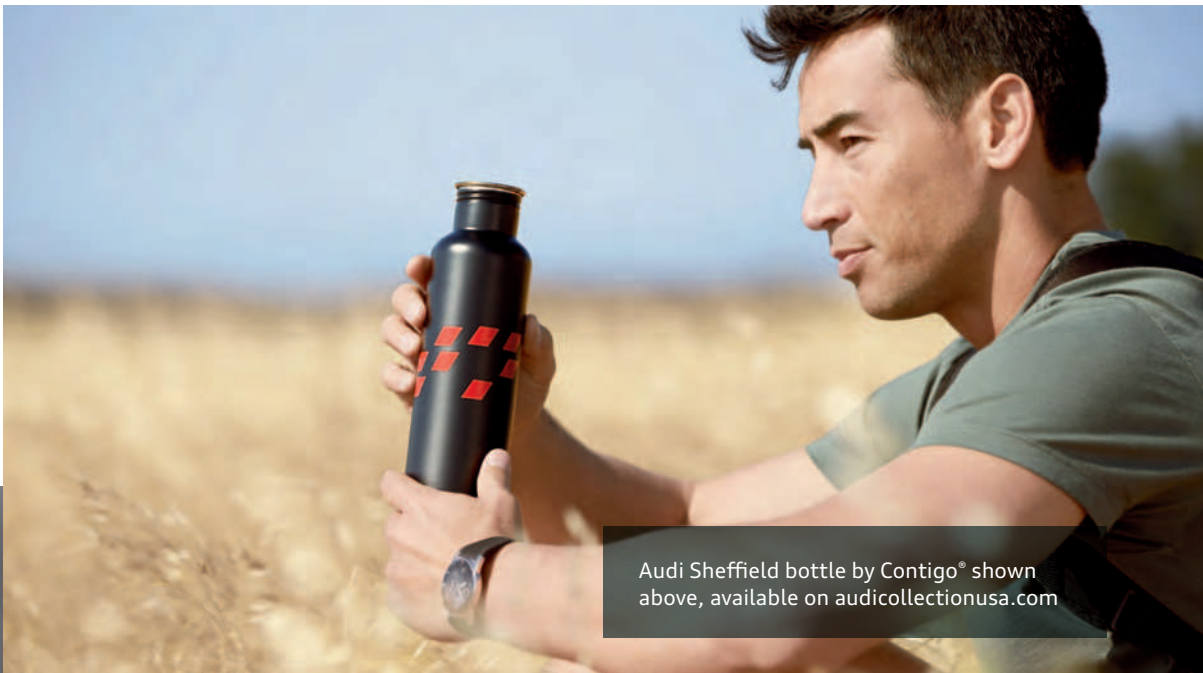


D



E

## Audi collection



Audi Sheffield bottle by Contigo® shown above, available on [audicollectionusa.com](http://audicollectionusa.com)

#### F. Men's Ingolstadt jacket

This three-layer performance soft-shell jacket, with a bonded fleece lining and an interior membrane, features custom map artwork in front and the Audi logo on the sleeve.

#### G. Men's chronograph watch

Top-quality workmanship combined with precise Swiss movement. This elegant watch features a black leather band, stainless-steel case, black dial and the Audi logo.

#### H. Ladies' half-zip mock neck by Spyder®

Moisture-wicking, quick-drying, slim-fit material provides plenty of comfort. Features the Spyder® and Audi Sport® logos and is available in black, red, gray or white.



F



G



H

Audi dash display watch shown above, available on [audicollectionusa.com](http://audicollectionusa.com)

Visit [parts.audiusa.com](http://parts.audiusa.com) for more.

<sup>1</sup> When driving during cold, snowy, or icy weather conditions, ensure that your vehicle is equipped with appropriate all-season or winter weather tires. Even with appropriate tires, you must always drive in a manner appropriate for the weather, visibility and road conditions.

Visit [audicollectionusa.com](http://audicollectionusa.com) for more.



Audi A5 2.0T Sport Coupe Black optic package

Black is still the new black.

You could call it a classic, or a power color. Whatever you choose to call it, it's undeniable that the Audi A5 2.0T Sport Coupe with the available Black optic package or Audi S5 Coupe with the available Black optic or Black optic plus package creates an indelible impression. Gloss Black elements enhance the bold exterior from its Singleframe® grille to window trim surrounds to either special 19" or 20" Audi Sport® design wheels with either Gloss Black or Matte Titanium finish. No matter the trend of the moment, you can engage in a sporty look that will always keep you looking on point.



2017 Audi A5 2.0T Sport Coupe shown in Misano Red pearl with available equipment.

Experience more  
in Audi library.

Dive deeper into the technical specifications, trim levels and technologies of the Audi A5 2.0T Sport through the Audi library app or web viewer.<sup>1</sup> Download the Audi library app on the App Store® or Google Play™ store, or visit Audiusa.com/brochures to explore a repository containing Audi informational materials—including a look at the 2017 Audi A5 2.0T Sport.



<sup>1</sup> Standard text and data usage rates apply.



# A5

2.0T Sport  
Coupe/Cabriolet



## A5 2.0T Sport Featured highlights

### Exterior

- > 18" Audi Sport® 10-spoke design wheels with 245/40 all-season tires<sup>1</sup>
- > Xenon plus headlights with LED daytime running lights
- > Headlight washing system
- > LED taillights
- > Power-adjustable heated exterior side mirrors
- > S line® competition plus bumpers with enlarged air intakes, Gloss Black S line® side sills, S line® emblems and rear diffuser
- > Rear lip spoiler
- > Dual exhaust outlets

### Infotainment/Technology

- > Driver information system
- > Audi concert radio with ten speakers and single CD player with MP3 playback capability
- > SiriusXM® Satellite Radio with 90-day trial subscription<sup>2</sup>
- > SD card slot with 32GB operating capacity (dual slots if equipped with MMI® navigation plus)<sup>3</sup>
- > Audi music interface with iPod® integration
- > BLUETOOTH® wireless technology preparation for compatible devices
- > Garage door opener (HomeLink®)
- > Three 12-volt power outlets
- > Cruise control with coast, resume and accelerate features
- > Parking system plus (front and rear acoustic sensors)
- > Rain/light sensor for automatic windshield wipers and headlights

### Interior/Seating

- > Three-zone automatic climate control
- > Flat-bottom three-spoke multifunction sport steering wheel
- > Shift paddles (automatic transmission)

- > Tilt and telescopic manually adjustable steering column
- > Illuminated locking glove box
- > Leather-wrapped shift knob (automatic transmission)
- > Folding and sliding front center armrest with height adjustment
- > Aluminum Trigon interior inlays
- > Aluminum door sill inlays
- > Front and rear floor mats
- > Power windows with one-touch up/down operation and pinch protection
- > Wind deflector (Cabriolet)
- > Acoustic folding roof—folds at speeds up to 31 mph (Cabriolet)
- > Panoramic tilting sunroof (Coupe)
- > Leather seating surfaces
- > Ten-way power front seats and four-way power lumbar adjustment for driver
- > Split folding rear seatbacks

### Safety

- > Driver and front passenger dual-stage airbags, front thorax side airbags, knee airbags, and Sideguard® head curtain airbags (Coupe)<sup>4</sup>
- > Driver and front passenger dual-stage airbags, knee airbags, and front head/thorax side airbags (Cabriolet)<sup>4</sup>
- > Front passenger occupant detection—for airbags<sup>4</sup>
- > Active rollover protection system (Cabriolet)
- > Lower Anchors and Tethers for Children (LATCH) in rear seats (Lower Anchors only on Cabriolet)
- > Electronic Stability Control (ESC) with traction control (ASR)
- > Anti-lock Brake System (ABS) with Electronic Brake-pressure Distribution (EBD) and brake assist
- > Tire-pressure monitoring system
- > Electromechanical parking brake

## A5 2.0T Sport Stand-alone options

- > Dark Brown Walnut Wood interior inlays
- > Fine Grain Ash Natural Brown Wood interior inlays

## A5 2.0T Sport Available packages

### Technology package

- > Adaptive xenon plus headlights with LED daytime running lights and static cornering lights
- > MMI® navigation plus with voice control system<sup>3</sup> (voice control system not available on Cabriolet)
- > Audi connect® with six-month trial subscription<sup>5</sup>
- > Color driver information system
- > Bang & Olufsen® Sound System with 14 speakers and 505 watts (12 speakers on Cabriolet)
- > HD Radio™ Technology
- > SiriusXM® Traffic with four-year subscription<sup>2</sup>
- > BLUETOOTH® streaming audio for compatible devices
- > Audi side assist<sup>6</sup>
- > Rear view camera

### Convenience package

- > Power-adjustable, auto-dimming, heated exterior side mirrors with memory
- > Audi advanced key—keyless start, stop and entry<sup>7</sup>
- > Auto-dimming interior rear view mirror with digital compass
- > Driver seat memory
- > Heated front seats

### Sport package

- > Sport suspension
- > Audi drive select
- > Ten-way power front sport seats and four-way power lumbar adjustment for driver and passenger
- > Black cloth headliner

### Black optic package (Coupe)

- > 19" Audi Sport® 10-Y-spoke design Gloss Black-finish wheels with 255/35 summer performance tires<sup>1</sup>
- > Gloss Black Singleframe® grille
- > Gloss Black trim around exterior windows
- > Gloss Black exterior side mirror housing

### 19" Wheel package (Cabriolet)

- > 19" Audi Sport® 10-Y-spoke design Gloss Black-finish wheels with 255/35 summer performance tires<sup>1</sup>



# S5

## Coupe/Cabriolet



### S5

#### Featured highlights

**+**  
In addition to or replaces  
highlighted features  
of A5 2.0T Sport

- Engineering/Performance**
- > 3.0-liter supercharged TFSI® V6
  - > 333 hp/325 lb-ft torque
  - > Acceleration (0–60 mph) in 4.9–5.3 seconds
  - > Top track speed of 155 mph<sup>8</sup>
- Transmission/Suspension/Chassis**
- > Six-speed manual transmission (Coupe only) or seven-speed S tronic® dual-clutch automatic transmission with steering wheel-mounted shift paddles
  - > quattro® all-wheel drive
  - > S5 sport suspension
  - > 13.6" ventilated front disc/13.0" ventilated rear disc brakes (with S5 badging on front calipers)

- Exterior**
- > 18" 5-parallel-spoke S design wheels with 245/40 summer performance tires<sup>1</sup>
  - > Power-adjustable, auto-dimming, heated exterior side mirrors with memory
  - > S model exterior appearance—Aluminum-optic Singleframe® grille, front/rear twin blades and exterior side mirror housings, body-colored side sills and integrated rear spoiler
  - > S model quad exhaust outlets

- Infotainment/Technology**
- > Bang & Olufsen® Sound System with 14 speakers and 505 watts (12 speakers on Cabriolet)
  - > Color driver information system
  - > Audi advanced key—keyless start, stop and entry<sup>7</sup>
  - > Audi drive select

- Interior/Seating**
- > Flat-bottom three-spoke multifunction sport steering wheel with S5 badging
  - > Auto-dimming interior rear view mirror with digital compass
  - > Brushed Aluminum interior inlays
  - > Leather/Alcantara® seating surfaces—S5 embossed (Coupe)
  - > Fine Nappa leather seats and door armrests—S5 embossed (Cabriolet)
  - > Twelve-way power front S sport-contoured seats, including four-way power lumbar adjustment for driver and passenger
  - > Driver seat memory
  - > Heated front seats

### S5

#### Stand-alone options

- > Sport differential
- > Adaptive damping suspension
- > 245/40 R18 all-season tires<sup>1</sup> (Coupe)
- > Carbon Atlas interior inlays
- > Layered Aluminum/Black Wood interior inlays

### S5

#### Available packages

- Technology package**
- > Adaptive xenon plus headlights with LED daytime running lights and static cornering lights
  - > MMI® navigation plus with voice control system<sup>3</sup> (voice control system not available on Cabriolet)
  - > Audi connect® with six-month trial subscription<sup>5</sup>
  - > HD Radio™ Technology
  - > SiriusXM® Traffic with four-year subscription<sup>2</sup>
  - > BLUETOOTH® streaming audio for compatible devices
  - > Audi side assist<sup>6</sup>
  - > Parking system with rear view camera (rear acoustic sensors)

- Fine Nappa Leather package (Coupe)**
- > Fine Nappa leather seats
  - > Leather door armrests and pulls

- Black optic package (Coupe)**
- > 19" Audi Sport® 5-arm-rotor design Matte Titanium-finish wheels with 255/35 summer performance tires<sup>1</sup>
  - > Gloss Black Singleframe® grille
  - > Gloss Black trim around exterior windows
  - > Body-colored exterior side mirror housings

- Black optic plus package (Coupe)**
- > 20" Audi Sport® 7-double-spoke design Gloss Black-finish wheels with 265/30 summer performance tires<sup>1</sup>
  - > Gloss Black Singleframe® grille
  - > Gloss Black trim around exterior windows
  - > Gloss Black exterior side mirror housings
- 19" Wheel package (Cabriolet)**
- > 19" Audi Sport® 5-arm-rotor design Matte Titanium-finish wheels with 255/35 summer performance tires<sup>1</sup>

1 Tires are supplied and warrantied by their manufacturer. High-performance tires are designed for better performance and handling in warm climates. When driving in cold, snowy or icy weather, you should equip your vehicle with four all-season or winter tires, which offer better traction under those conditions. We suggest you use the Audi-recommended winter or all-season tires specified for your Audi. High-performance tires also have a lower aspect ratio that aids performance and handling. Driving over rough or damaged road surfaces, as well as debris, curbs and other obstacles, can cause serious damage to wheels, tires, vehicle body and suspension parts. Be careful to avoid road hazards and reduce your speed, especially if your vehicle is equipped with low-profile tires. Please also remember when making your selection that, while these tires deliver responsive handling, they may ride less comfortably and make more noise than others. Finally, these tires may wear more quickly than other choices. It is important that the inflation pressure is regularly checked and maintained at recommended levels. 2 SiriusXM® Satellite Radio and SiriusXM® Traffic subscriptions are sold separately or as a package after trial period and are continuous until you call SiriusXM® to cancel. See Customer Agreement for complete terms and more information at [www.siriusxm.com](http://www.siriusxm.com). SiriusXM® Traffic service available in select markets. SiriusXM® U.S. Satellite Service available only to those in the 48 contiguous U.S.A., D.C. and Puerto Rico (with coverage limitations). 3 MMI® navigation plus depends on signals from the worldwide Global Positioning Satellite network. The vehicle's electrical system and existing wireless and satellite technologies must be available and operating properly for the system to function. The system is designed to provide you with suggested routes in locating addresses, destinations and other points of interest. Changes in street names, construction zones, traffic flow, points of interest and other road system changes are beyond the control of Audi of America, Inc. Complete detailed mapping of lanes, roads, streets, toll roads, highways, etc., is not possible, therefore you may encounter discrepancies between the mapping and your actual location. Please rely on your individual judgment in determining whether or not to follow a suggested MMI® navigation plus route. Mapping updates are available at no charge for the first five map updates and are subsequently available on a subscription basis. 4 Airbags are supplemental restraints only and will not deploy in all crash circumstances. Always use safety belts and seat children only in the rear, using restraint systems appropriate for their size and age. 5 Always pay careful attention to the road, and do not drive while distracted. Audi connect® should only be used when it is safe and appropriate. Audi connect® services and features are optional, provided with the support of authorized affiliated and third party service providers, and may require additional subscriptions with separate terms and conditions. Available on select models. Certain services collect location information, see Terms of Service for information about how to disable and for other details. 6 The features discussed are not substitutes for attentive driving. Please see your owner's manual for further details and important limitations. 7 Some Audi models are equipped with a keyless ignition feature. The details as to how the system works can vary, and Audi owners should consult their owner's literature or an authorized Audi dealer if they have further questions about the operation of this feature. Please note that Audi warns against leaving the vehicle unattended with the engine running, particularly in enclosed spaces. 8 Top track speed is electronically limited in the U.S. Always obey all speed and traffic laws.



Technical Specifications

Engineering   Performance	A5 2.0T Sport Coupe	A5 2.0T Sport Cabriolet	S5 Coupe	S5 Cabriolet
Engine type	Four-cylinder	Four-cylinder	Six-cylinder	Six-cylinder
Engine block/Cylinder head	Cast-iron/Aluminum-alloy	Cast-iron/Aluminum-alloy	Aluminum-alloy/Aluminum-alloy	Aluminum-alloy/Aluminum-alloy
Displacement (cc)/Bore and stroke (mm)	1,984/82.5 x 92.8	1,984/82.5 x 92.8	2,995/84.5 x 89.0	2,995/84.5 x 89.0
Horsepower (@ rpm)	220 @ 4,450–6,000	220 @ 4,450–6,000	333 @ 5,500–6,500	333 @ 5,500–6,500
Torque (lb-ft @ rpm)	258 @ 1,500–4,300	258 @ 1,500–4,300	325 @ 2,900–5,300	325 @ 2,900–5,300
Compression ratio	9.6:1	9.6:1	10.3:1	10.3:1
Valvetrain	16-valve DOHC with valvelift system	16-valve DOHC with valvelift system	24-valve DOHC	24-valve DOHC
Induction/Fuel injection	Turbocharged/TFSI®	Turbocharged/TFSI®	Supercharged/TFSI®	Supercharged/TFSI®
A5 2.0T acceleration with manual/Tiptronic® transmission (0–60 mph)	6.3/6.1 seconds	—/6.6 seconds	—	—
S5 acceleration with manual/S tronic® transmission (0–60 mph)	—	—	4.9/4.9 seconds	—/5.3 seconds
Top track speed <sup>1</sup>	130 mph	130 mph	155 mph	155 mph

Transmission   Drivetrain				
Six-speed manual transmission with quattro® all-wheel drive	■	—	■	—
Eight-speed Tiptronic® automatic transmission with quattro® all-wheel drive	Available	■	—	—
Seven-speed S tronic® dual-clutch automatic transmission with quattro® all-wheel drive	—	—	Available	■
Sport differential	—	—	Available	Available

Body   Suspension   Chassis				
Fully galvanized steel unibody with aluminum front fenders and multistep anti-corrosion protection	■	■	■	■
Five-link front suspension	■	■	■	■
Trapezoidal-link rear suspension	■	■	■	■
Sport suspension	Available	Available	■	■
Adaptive damping suspension	—	—	Available	Available
Ventilated front disc/Solid rear disc brakes (in)	12.6/11.8	12.6/11.8	—	—
Ventilated front disc/Ventilated rear disc brakes (in)	—	—	13.6/13.0	13.6/13.0
Electromechanical power steering system	■	■	■	■
Dynamic steering	—	—	Available	Available
Steering ratio	15.9:1	15.9:1	15.9:1	15.9:1
Turning diameter, curb-to-curb (ft)	37.4	37.4	37.4	37.4

Exterior measurements	A5 2.0T Sport Coupe	A5 2.0T Sport Cabriolet	S5 Coupe	S5 Cabriolet
Wheelbase (in)	108.3	108.3	108.3	108.3
Length (in)	182.1	182.1	182.7	182.7
Height (in)	54.0	54.4	53.9	54.2
Overall width with mirrors (in)	79.5	79.5	79.5	79.5
Track (in, front/rear)	62.6/62.1	62.6/62.1	62.5/62.0	62.5/62.0
Curb weight with manual transmission (lb)	3,583	—	3,858	—
Curb weight with Tiptronic® transmission (lb)	3,682	4,046	—	—
Curb weight with S tronic® transmission (lb)	—	—	3,925	4,310
Drag coefficient (Cw)	.32	.34	.31	.33

Interior measurements				
Head room (in, front/rear)	37.5/36.0	40.0/36.3	37.5/36.0	40.0/36.3
Leg room (in, front/rear)	41.3/31.7	41.3/31.9	41.3/31.7	41.3/31.9
Shoulder room (in, front/rear)	54.3/52.8	54.3/46.8	54.3/52.8	54.3/46.8
Cargo volume (cu ft, rear seatbacks up)	12.2	10.2	12.2	10.2
Seating capacity	4	4	4	4

EPA mileage estimates   Capacities   Emissions				
City/highway/combined <sup>2</sup>	NA	NA	NA	NA
Engine oil (qt)	4.9	4.9	7.2	7.2
Fuel (gal)	16.1	16.1	16.1	16.1
Recommended fuel	Premium	Premium	Premium	Premium
Emissions rating	ULEV II	ULEV II	ULEV II	ULEV II

■ Standard    — Not applicable    NA Information not available at time of printing

1 Top track speed is electronically limited in the U.S. Always obey all speed and traffic laws.   2 2017 EPA estimates not available at time of printing. See www.fueleconomy.gov for details. Your mileage will vary and depends on several factors, including your driving habits and vehicle condition.



## Wheels

18" Audi Sport® 10-spoke design



Standard on A5 2.0T Sport

19" Audi Sport® 10-Y-spoke design

Gloss Black finish



Available on A5 2.0T Sport

18" 5-parallel-spoke S design

Silver finish



Standard on S5

19" Audi Sport® 5-arm-rotor design

Matte Titanium finish



Available on S5

20" Audi Sport® 7-double-spoke design

Gloss Black finish



Available on S5

## Exterior Colors

Brilliant Black



S5

Ibis White



A5 2.0T Sport, S5

Florett Silver metallic



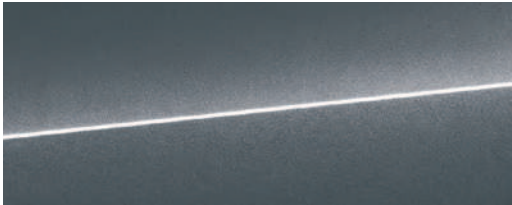
A5 2.0T Sport, S5

Glacier White metallic



S5

Monsoon Gray metallic



S5

Moonlight Blue metallic



S5

Mythos Black metallic



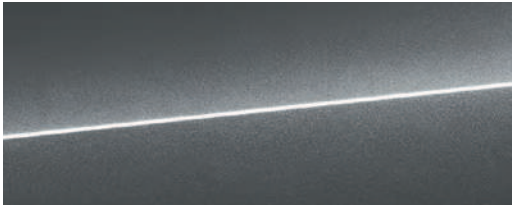
A5 2.0T Sport, S5

Suzuka Gray metallic



A5 2.0T Sport (Coupe only)

Daytona Gray pearl



A5 2.0T Sport, S5

Misano Red pearl



A5 2.0T Sport, S5

Sepang Blue pearl



A5 2.0T Sport, S5

Black acoustic folding roof



Red acoustic folding roof





Interior Inlays



Aluminum Trigon



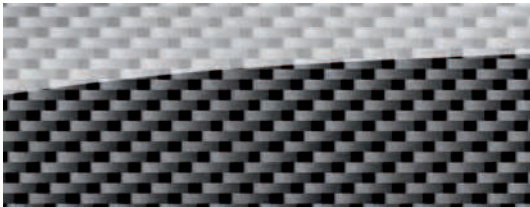
Standard on A5 2.0T Sport

Fine Grain Ash Natural Brown Wood



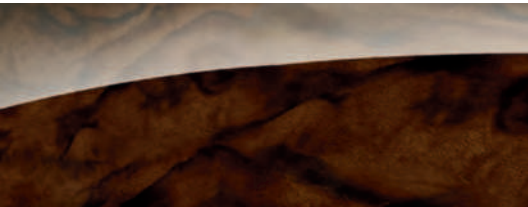
Optional on A5 2.0T Sport

Carbon Atlas



Optional on S5

Dark Brown Walnut Wood



Optional on A5 2.0T Sport

Brushed Aluminum



Standard on S5

Layered Aluminum/Black Wood



Optional on S5

Interior Colors and Seat Selections

Black leather



Standard seat, Sport seat  
on A5 2.0T Sport

Chestnut Brown leather



Standard seat, Sport seat  
on A5 2.0T Sport

Titanium Gray leather



Standard seat, Sport seat<sup>1</sup>  
on A5 2.0T Sport

Black leather/  
Black Alcantara®



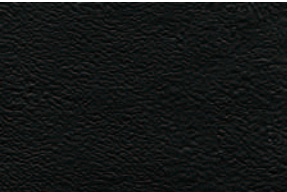
S Sport seat on S5 Coupe

Black leather/Lunar Silver  
Alcantara®



S Sport seat on S5 Coupe

Black Fine Nappa leather



S Sport seat on S5

Black/Lunar Silver  
Fine Nappa leather



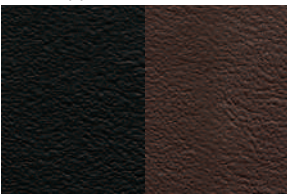
S Sport seat on S5

Black/Magma Red  
Fine Nappa leather



S Sport seat on S5

Black/Chestnut Brown  
Fine Nappa leather



S Sport seat on S5



Standard seat



Sport seat



S5 Sport seat

Interior inlays and interior color options will vary based on model, trim level and package combination. See your dealer for details. 1 Titanium Gray leather front sport seats available on Audi A5 2.0T Sport Cabriolet model only.



[www.time4leasing.co.uk/car-leasing/audi/](http://www.time4leasing.co.uk/car-leasing/audi/)

A5  
2017



Note: A word about this brochure. Audi of America, Inc., believes the specifications in this brochure to be correct at the time of printing. However, specifications, standard equipment, options, fabrics, and colors are subject to change without notice. Some equipment may be unavailable when your vehicle is built. Please ask your dealer for advice concerning current availability of standard and optional equipment, and your dealer will verify that your vehicle will include the equipment you ordered. Vehicles in this brochure are shown with optional equipment. See your dealer for complete details on the Audi New Vehicle Limited Warranty, twelve-year limited warranty against corrosion perforation, and Audi 24/7 Roadside Assistance. (Roadside assistance coverage provided by Road America in the U.S. Certain conditions apply; see your dealer for details.) Tires supplied by various manufacturers. "Audi," all model names, "Audi connect," "Audi Sport," "MMI," "quattro," "S line," "S tronic," "Sideguard," "Singleframe" and "TFSI" are registered trademarks of AUDI AG. "App Store" and "iPod" are registered trademarks of Apple Inc. "Alcantara" is a registered trademark of Alcantara S.p.A. "Bang & Olufsen" is a registered trademark of Bang & Olufsen. The BLUETOOTH word mark and logos are owned by the Bluetooth SIG, Inc., and any use of such marks by AUDI AG is under license. "Facebook" is a registered trademark of Facebook, Inc. "Google Earth" and "Google Play" are trademarks of Google Inc. © 2016 Google Inc. All rights reserved. "HD Radio" and the HD Radio logo are proprietary trademarks of iBiquity Digital Corporation. "HomeLink" is a registered trademark of Gentex Corporation. "SiriusXM" and all related marks and logos are trademarks of Sirius XM Radio Inc. and its subsidiaries. "Spyder" is a trademark of Spyder Active Sports, Inc. "Tiptronic" is a registered trademark of Dr. Ing h.c. F. Porsche AG. "Wi-Fi" is a registered trademark of the Wi-Fi Alliance. All other trademarks are the property of their respective owners. Some European models shown. Some features may not be available at time of order.